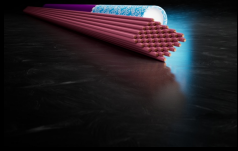


# CEWELD CuZn40G

TYPE	Universal fluxcored brass brazing alloy with good mechanical strength				
ANWENDUNGEN	Brazing: Steels, Copper, Cast iron, Copper alloys, Nickel and for welding Brass and Bronze. This alloy is mainly used in the furniture and the bicycle industry for joining steels, also this alloy can be used for rebuilding Brass- ship propellers by flame welding.				
EIGENSCHAFTEN	Easy to use brass alloy for brazing without separate flux, (flux cored rod) good mechanical properties and high corrosion resistance. Flux/Paste: CEWELD Universal-Flux				
KLASSIFIKATION	AWS	A 5.8: RBCuZn-A			
	EN ISO	17672: Cu 470			
	W.Nr.	2.0533			
	F-nr	106			
GEEIGNET FÜR	Brass, Copper, Steels, Manganese bronze, Nickel alloys, Cast iron etc..				
ZULASSUNGEN					
SCHWEISSPOSITIONEN					
TYPICAL CHEMICAL ANALYSIS OF THE FILLER METAL (%)	Mn	Cu	Zn	Sn	Fe
	0.1	60	Rem.	0.35	0.25
MECHANISCHE GÜTEWERTE	Heat Treatment	R <sub>P0,2</sub> (MPa)	R <sub>m</sub> (MPa)	A5 (%)	Hardness
	As Welded		350		88 HB
RÜCKTROCKNUNG	Not required				
MELTING RANGE	875 - 895°C				
GAS ACC. EN ISO 14175					



# CEWELD CuZn40G

CUZN40G 2,5 X 500MM

Packaging	KG/unit	EanCode
Tube	1	8720663421098