

CEWELD E DUR 400 CrMo

TYPE Basic coated electrode for rebuilding heat resistant machine parts and buffer layers.(Fe 3, 400 HB CrMo)

APPLICATIONS CEWELD E DUR 400 CrMo is for Hardfacing, rebuilding, overlays, machine parts, wheels, conveyors, crossings, buffer layers prior to Hardfacing etc.

PROPERTIES CEWELD E DUR 400 CrMo is an exceptional easy to apply Eektrode without any risk for cracks and can also be applied on austenitic manganese steels, 40 HRc is usually almost obtained in the first layer. The weld deposit has a high impact resistance combined with abrasion resistance, including metal to metal friction resistance, and increased working temperatures up to 550°C.

CLASSIFICATION EN ISO 14700: E Fe3
DIN 8555: E 3-UM-40-PT

SUITABLE FOR Rebuilding worn machine parts, Stone crushers, Hammers, Gears, Cams, rails, crossings etc.

APPROVALS

WELDING POSITIONS



TYPICAL CHEMICAL ANALYSIS OF WELD METAL (%)

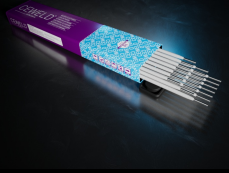
C	Mn	Cr	Mo	Fe	Si
0.1	0.6	6.5	3	Rem.	0.4

MECHANICAL PROPERTIES

Heat Treatment	R _{P0,2} (MPa)	R _m (MPa)	A ₅ (%)	Hardness
As Welded				400 HB

REDRYING 300°C / 2 hr

GAS ACC. EN ISO 14175



CEWELD E DUR 400 CrMo

E DUR 400 CRMO 2,5 X
350MM

Packaging	KG/unit	EanCode
Can	3	8720663401601