

CEWELD CuZn40G

TYPE Universal fluxcored brass brazing alloy with good mechanical strength

APPLICATIONS Brazing: Steels, Copper, Cast iron, Copper alloys, Nickel and for welding Brass and Bronze. This alloy is mainly used in the furniture and the bicycle industry for joining steels, also this alloy can be used for rebuilding Brass- ship propellers by flame welding.

PROPRIÉTÉS Easy to use brass alloy for brazing without separate flux, (flux cored rod) good mechanical properties and high corrosion resistance.
Flux/Paste: CEWELD Universal-Flux

CLASSIFICATION

AWS	A 5.8: RBCuZn-A
EN ISO	17672: Cu 470
W.Nr.	2.0533
F-nr	106

CONVIENT POUR Brass, Copper, Steels, Manganese bronze, Nickel alloys, Cast iron etc..

AGRÉMENTS

POSITIONS DE SOUDAGE



TYPICAL CHEMICAL ANALYSIS OF THE FILLER METAL (%)

Mn	Cu	Zn	Sn	Fe
0.1	60	Rem.	0.35	0.25

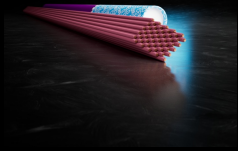
PROPRIÉTÉS MÉCANIQUES

Heat Treatment	R _{P0,2} (MPa)	R _m (MPa)	A5 (%)	Hardness
As Welded		350		88 HB

ETUVAGE Not required

MELTING RANGE 875 - 895°C

GAS ACC. EN ISO 14175



CEWELD CuZn40G

CUZN40G 2,5 X 500MM

Packaging	KG/unit	EanCode
Tube	1	8720663421098