

# CEWELD CuZn40F

**TYPE** Universal brass brazing alloy with good strength

**APPLICATIONS** Mainly used in the furniture and the bicycle industry

**PROPRIÉTÉS** Easy to use brass alloy for brazing

**CLASSIFICATION**

AWS	A 5.8: RBCuZn-A
EN ISO	17672: Cu 670
W.Nr.	2.0367
F-nr	106

**CONVIENT POUR** Brazing: Steels, Copper, Cast iron, Copper Alloys, Nickel and for welding Brass and Bronze. This Alloy is mainly used in the furniture and the bicycle industry for joining Steels, also this Alloy can be used for rebuilding Brass-ship propellers by flame welding.

**AGRÉMENTS**

**POSITIONS DE SOUDAGE**



**TYPICAL CHEMICAL ANALYSIS OF THE FILLER METAL (%)**

Si	Mn	Cu	Zn	Sn
0.1	0.1	60	Rem.	0.2

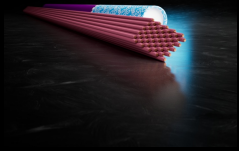
**PROPRIÉTÉS MÉCANIQUES**

Heat Treatment	R <sub>P0,2</sub> (MPa)	R <sub>m</sub> (MPa)	A5 (%)	Hardness
As Welded		350		88 HB

**ETUVAGE** Not required

**MELTING RANGE** 870 - 900°C

**GAS ACC. EN ISO 14175**



# CEWELD CuZn40F

CUZN40F 2,0 X 500MM

Packaging	KG/unit	EanCode
Tube	1	8720663421036

CUZN40F 2,5 X 500MM

Packaging	KG/unit	EanCode
Tube	1	8720663421081

CUZN40F 3,0 X 500MM

Packaging	KG/unit	EanCode
Tube	1	8720663421104

CUZN40F 4,0 X 500MM

Packaging	KG/unit	EanCode
Tube	1	8720663421111

CUZN40F 5,0 X 500MM

Packaging	KG/unit	EanCode
Tube	1	8720663421128